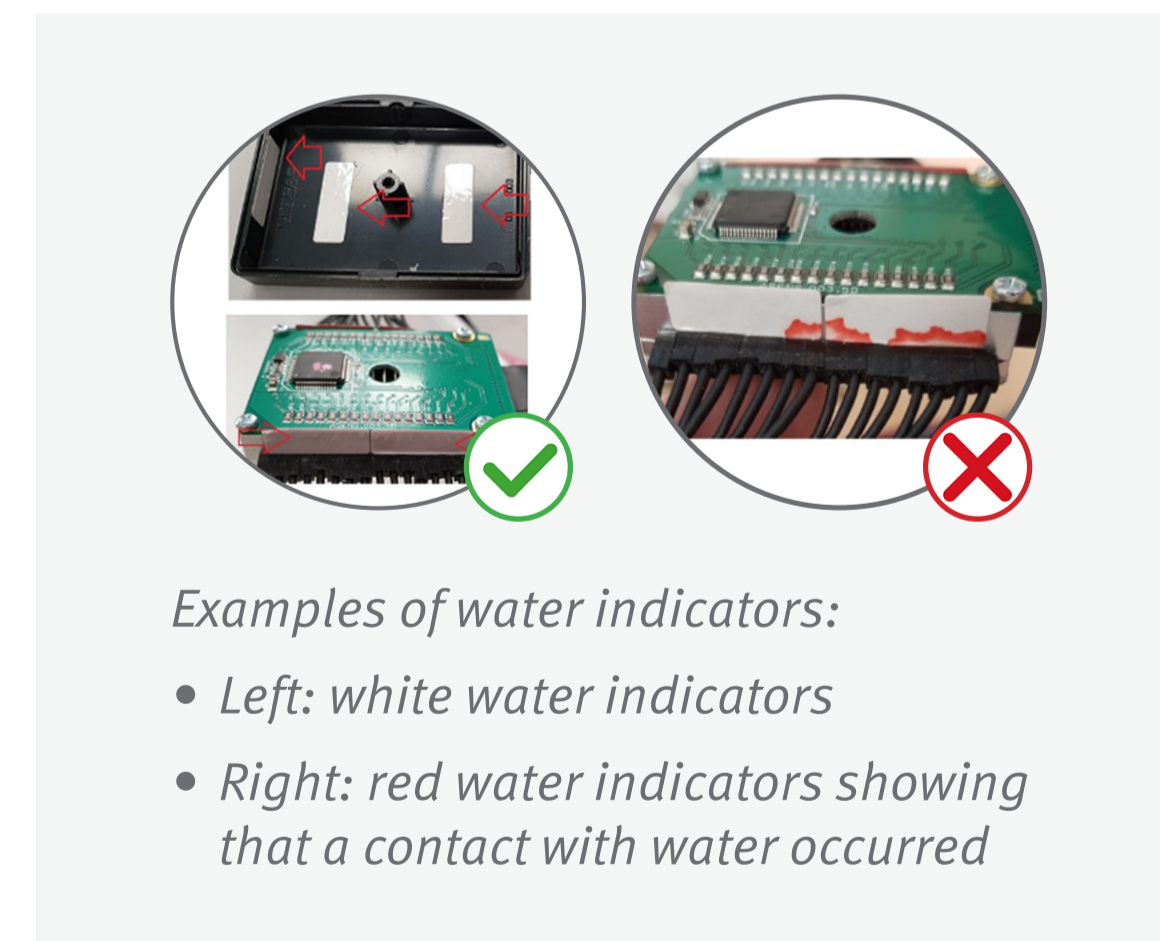
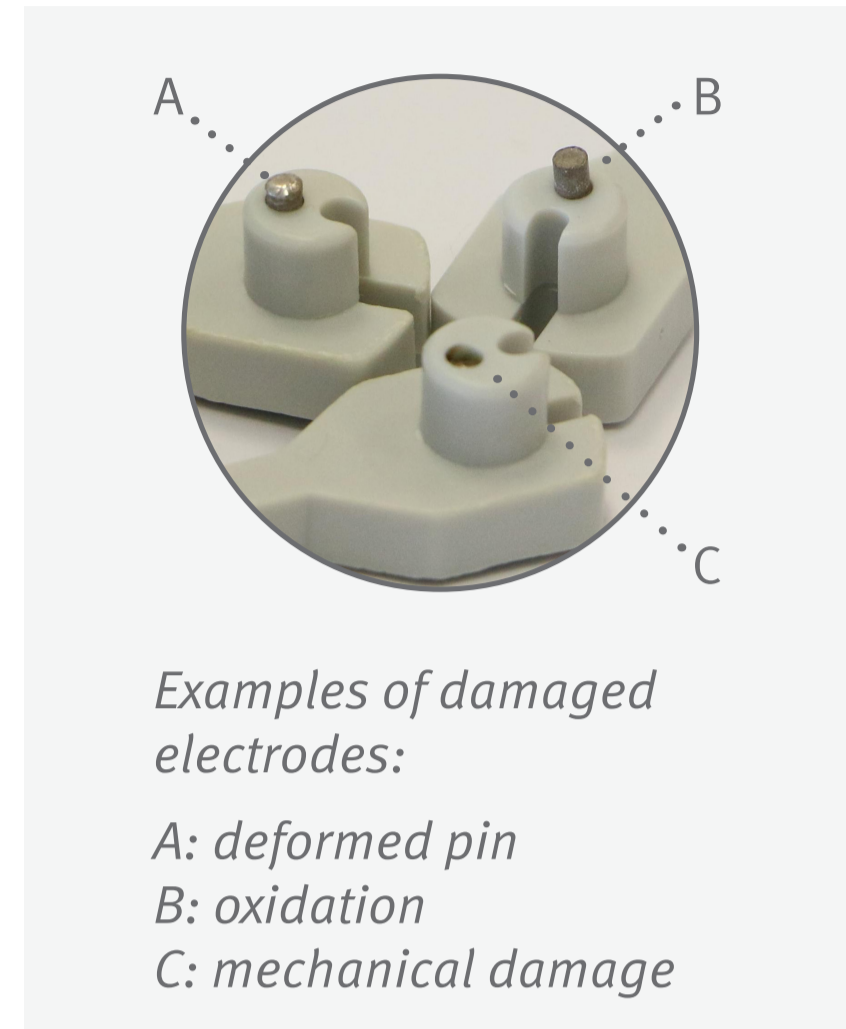
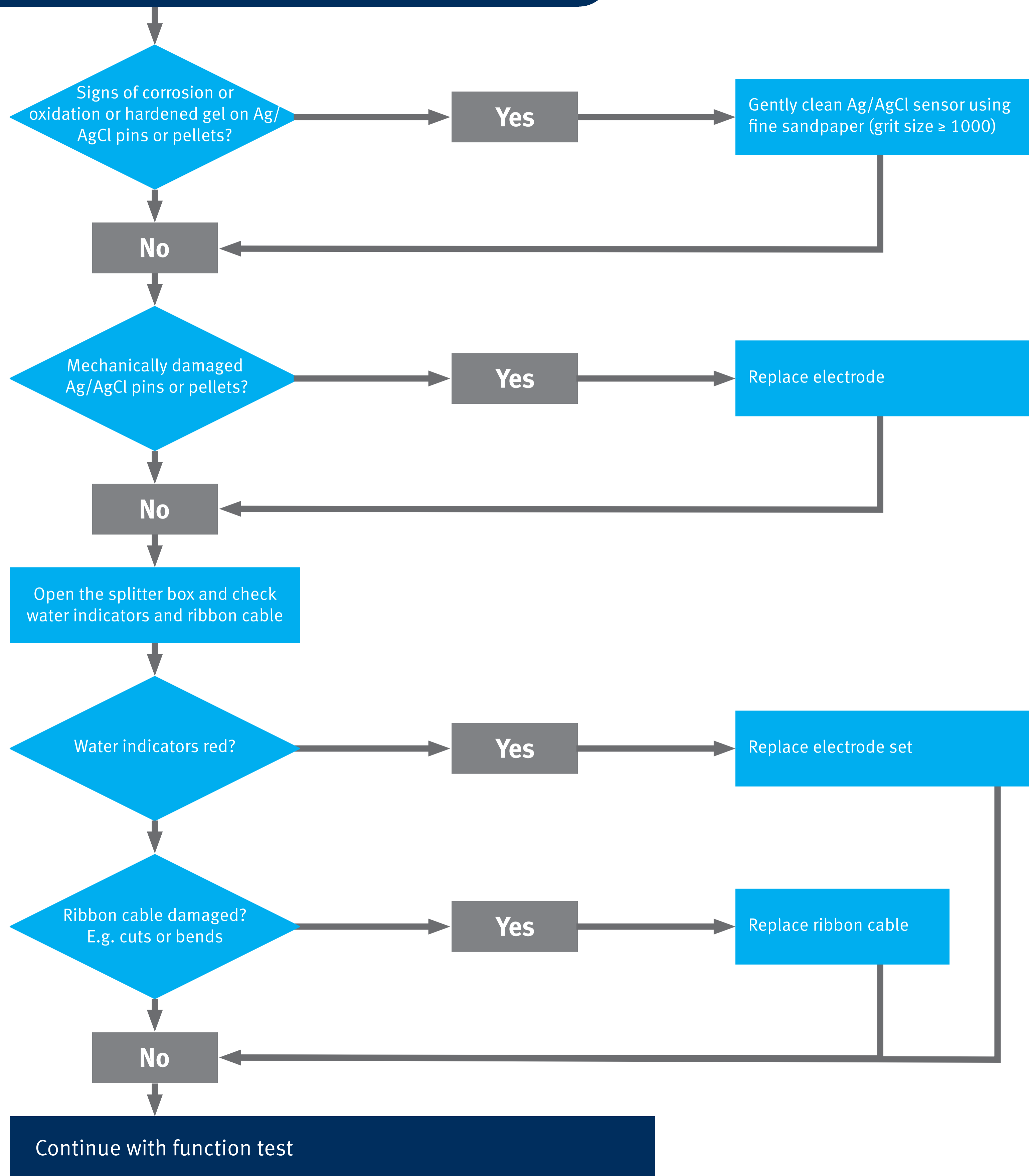
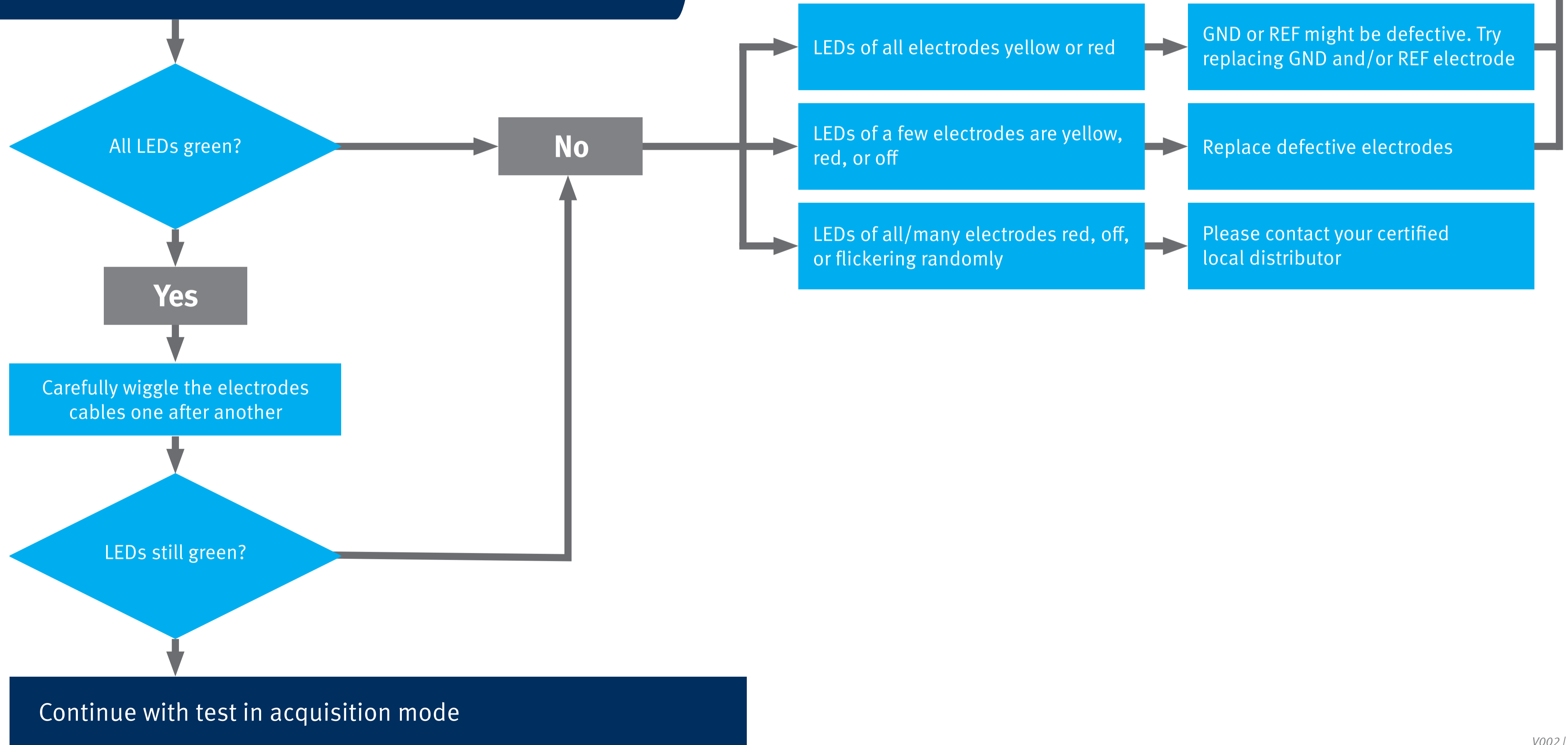


Visual inspection of individual electrodes and splitter box



Check electrode LEDs and impedance values

- Make sure that the impedance thresholds of the actiCAP active electrode system is set to the default settings.
- Place electrodes (incl. GND and REF) in saline solution, using only one bundle at a time. Start impedance mode in BrainVision Recorder or press the *Impedance* button on the actiCAP ControlBox.
- Carefully wiggle the electrode cables one after another.



Check signal quality using the test signal mode

- Place electrodes (incl. GND and REF) in saline solution, using only one bundle at a time.
- Disable all raw data saving filters and all display filters in your current workspace.
- Initiate test signal:
 - BrainAmp & ControlBox:
In BrainVision Recorder, enable (in 'Configuration') 'Use actiCAP Test Signal'. Then click on the Monitoring button in Recorder and press the Test Signal button on the actiCAP ControlBox.
 - actiCHamp (Plus):
Click on the test signal button in Recorder.

